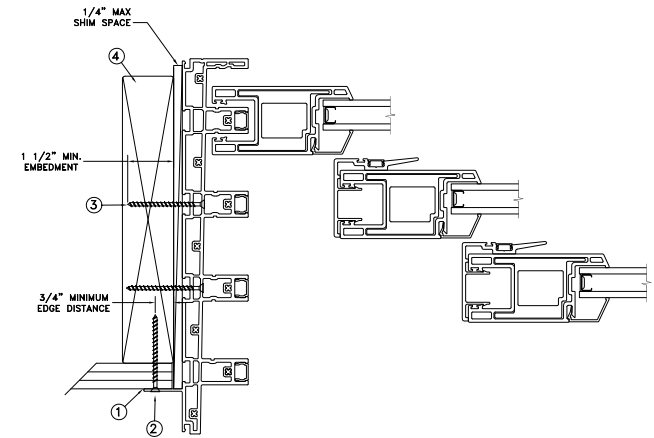
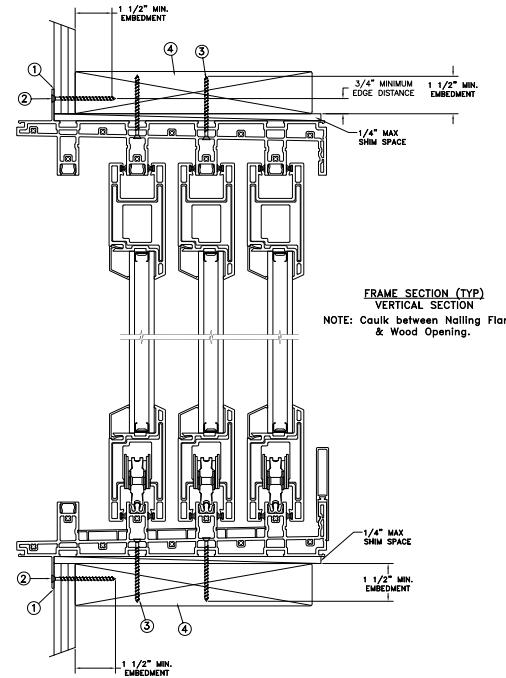
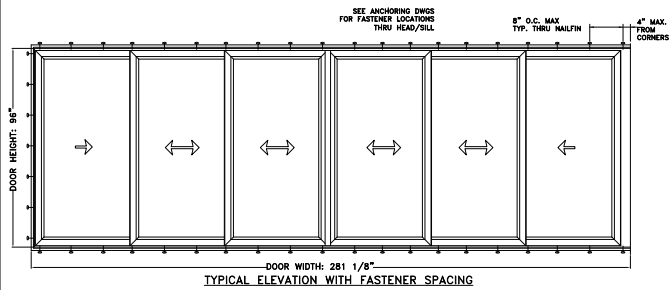


NAILFIN / THROUGH
FRAME INSTALLATION



Max Frame	DP	IMPACT
281 3/8 x 96	+50/-55	NO

Installation Notes:

1. Seal flange/frame to substrate.
2. Use #8 PH or greater fastener through the nailfin with sufficient length to penetrate a minimum of 1 1/2" into the wood framing. For 2x wood frame substrate (min. S.G. = 0.42)
3. Use #8 PH or greater fastener through the pre-drilled holes in the head/sill tracks at the center (2) towers with sufficient length to penetrate a minimum of 1 1/2" into the wood framing. See additional details for location and spacing.
4. Host structure (wood buck, masonry, steel) to be designed and anchored to properly transfer all loads to the structure. The host structure is the responsibility of the architect or engineer of record for the project of installation.

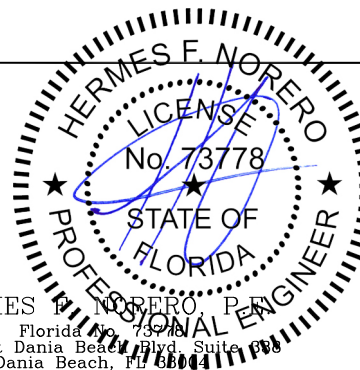
General Notes:

1. The product shown herein is designed, tested and manufactured to comply with the wind load criteria of the adopted International Building Code (IBC), the International Residential Code (IRC), the Florida Building Code (FBC) excluding HVHZ and the industry requirement for the stated conditions.
2. All glazing shall conform to ASTM E1300.
3. At minimum, glazing is 4.7mm tempered - 12.9mm airspace - 4.7mm tempered.
4. Use structural or composite shims where required.

This schedule addresses only the fasteners required to anchor the unit to achieve the rated design pressure and impact performance (where applicable) up to the size limitations noted. It is not intended as a guide to the installation process and does not address the sealing consideration that may arise in different wall conditions. For the complete installation procedure, see the instructions packaged with the unit or go to www.jeld-wen.com/resources/installation.

DISCLAIMER:

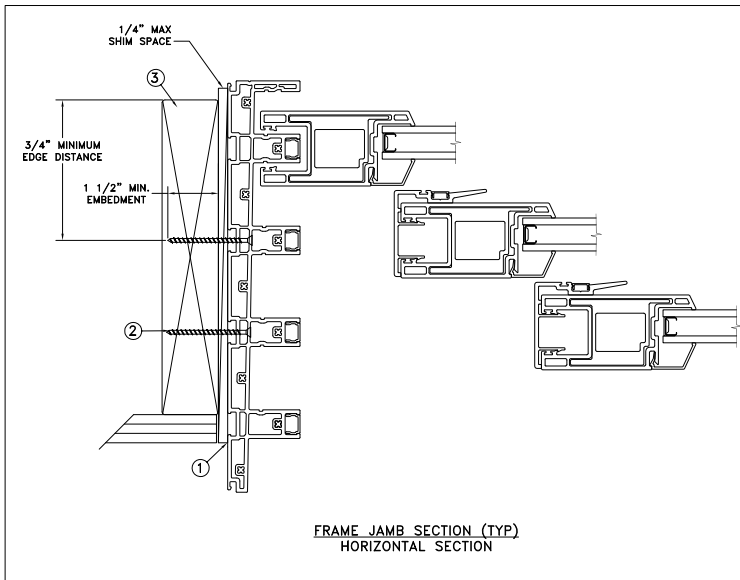
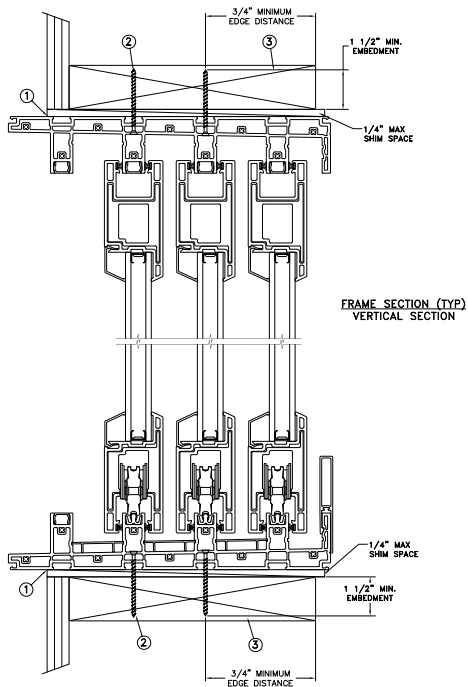
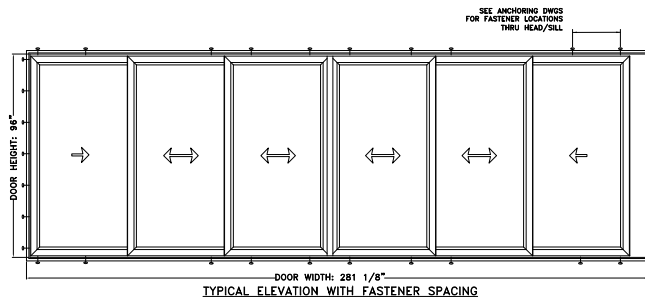
This drawing and its contents are confidential and are not to be reproduced or copied in whole or in part or used or disclosed to others except as authorized by JELD-WEN Inc.



HERMES F. NORERO, P.E.
Florida No. 73778
398 East Dania Beach Blvd Suite 200
Dania Beach, FL 33004

PROJECT ENGINEER:	DATE:	JELD-WEN	3737 LAKEPORT BLVD.	
DRAWN BY:	SCALE:		KLAMATH FALLS OR, 97601	
CHECKED BY:	TITLE:	PHONE: (800) 535-3936		
APPROVED BY:	Premium Vinyl Multi-Slide Patio Door 6-Panel 4-Track XXXXXP Jamb			
PART/PROJECT No.:				
IDENTIFIER No.		PLANT NAME AND LOCATION:	CAD DWG. No.:	REV:
NCTL 210-4025-1	Venice-FL	PremVinylMTSLDR4 Cert	A	

THROUGH FRAME
INSTALLATION



Max Frame	DP	IMPACT
281 3/8 x 96	+50/-55	NO

Installation Notes:

1. Seal flange/frame to substrate.
2. Use #14 PH or greater fastener through the pre-drilled holes in the head/sill tracks at the center (2) towers with sufficient length to penetrate a minimum of 1 1/2" into the wood framing. See additional details for location and spacing. For 2X wood frame substrate (min. SG = 0.42)
3. Host structure (wood buck, masonry, steel) to be designed and anchored to properly transfer all loads to the structure. The host structure is the responsibility of the architect or engineer of record for the project of installation.

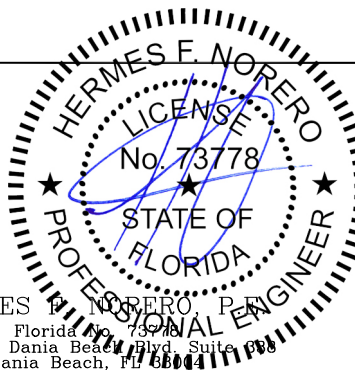
General Notes:

1. The product shown herein is designed, tested and manufactured to comply with the wind load criteria of the adopted International Building Code (IBC), the International Residential Code (IRC), the Florida Building Code (FBC) excluding HVHZ and the industry requirement for the stated conditions.
2. All glazing shall conform to ASTM E1300.
3. At minimum, glazing is 4.7mm tempered - 12.9mm airspace - 4.7mm tempered.
4. Use structural or composite shims where required.

This schedule addresses only the fasteners required to anchor the unit to achieve the rated design pressure and impact performance (where applicable) up to the size limitations noted. It is not intended as a guide to the installation process and does not address the sealing consideration that may arise in different wall conditions. For the complete installation procedure, see the instructions packaged with the unit or go to www.jeld-wen.com/resources/installation.

DISCLAIMER:

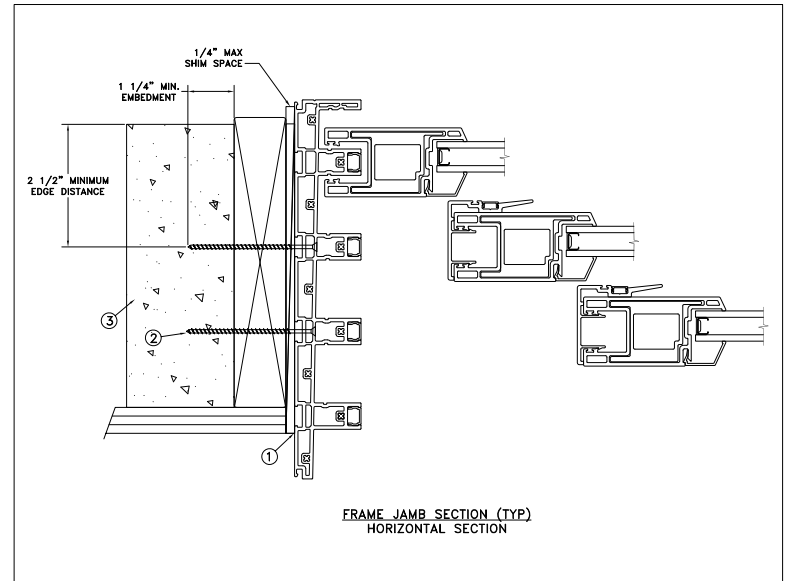
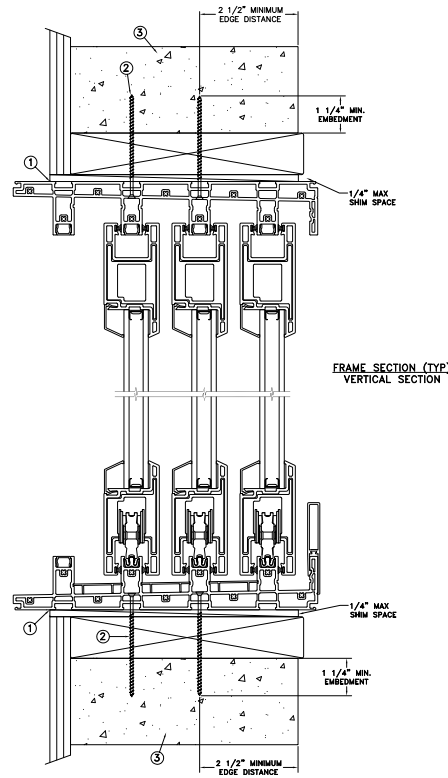
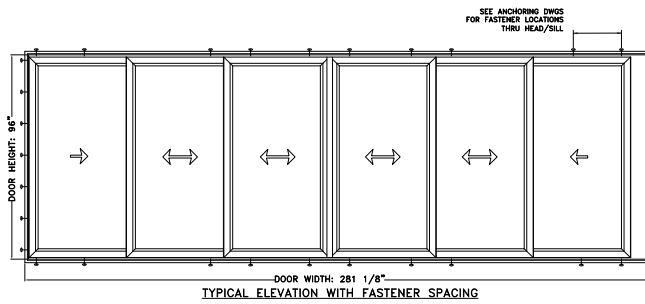
This drawing and its contents are confidential and are not to be reproduced or copied in whole or in part or used or disclosed to others except as authorized by JELD-WEN Inc.



HERMES F. NORERO, P.E.
Florida Professional Engineer
398 East Dania Beach Blvd Suite 200
Dania Beach, FL 33004

PROJECT ENGINEER:	DATE:	JELD-WEN	3737 LAKEPORT BLVD.	
DRAWN BY:	SCALE:		KLAMATH FALLS OR, 97601	
CHECKED BY:	TITLE:	PHONE: (800) 535-3936		
APPROVED BY:	Premium Vinyl Multi-Slide Patio Door 6-Panel 4-Track XXXXXP Jamb			
PART/PROJECT No.:				
IDENTIFIER No.	PLANT NAME AND LOCATION:	CAD DWG. No.:	REV:	SHEET
NCTL 210-4025-1	Venice-FL	PremVinylMTSLDR4 Cert	A	

CONCRETE/MASONRY
INSTALLATION



Max Frame	DP	IMPACT
281 3/8 x 96	+50/-55	NO

Installation Notes:

1. Seal flange/frame to substrate.
2. Use 1/4" Elco Tapcon or equivalent fasteners through the pre-drilled holes in the head/sill tracks at the center (2) towers with sufficient length to penetrate a minimum of 1 1/2" into concrete or masonry at each location with a 2 1/2" min. from edge distance. For concrete (min. fc = 2000 psi) or masonry substrate (CMU shall adhere to ASTM C90).
3. Host structure (wood buck, masonry, steel) to be designed and anchored to properly transfer all loads to the structure. The host structure is the responsibility of the architect or engineer of record for the project of installation.

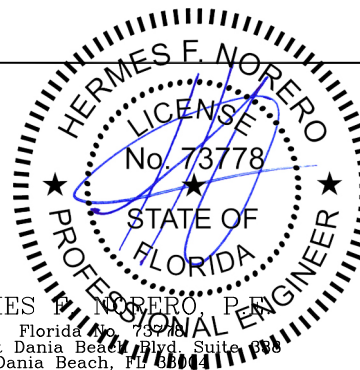
General Notes:

1. The product shown herein is designed, tested and manufactured to comply with the wind load criteria of the adopted International Building Code (IBC), the International Residential Code (IRC), the Florida Building Code (FBC) excluding HVHZ and the industry requirement for the stated conditions.
2. All glazing shall conform to ASTM E1300.
3. At minimum, glazing is 4.7mm tempered - 12.9mm airspace - 4.7mm tempered.
4. Use structural or composite shims where required.

This schedule addresses only the fasteners required to anchor the unit to achieve the rated design pressure and impact performance (where applicable) up to the size limitations noted. It is not intended as a guide to the installation process and does not address the sealing consideration that may arise in different wall conditions. For the complete installation procedure, see the instructions packaged with the unit or go to www.jeld-wen.com/resources/installation.

DISCLAIMER:

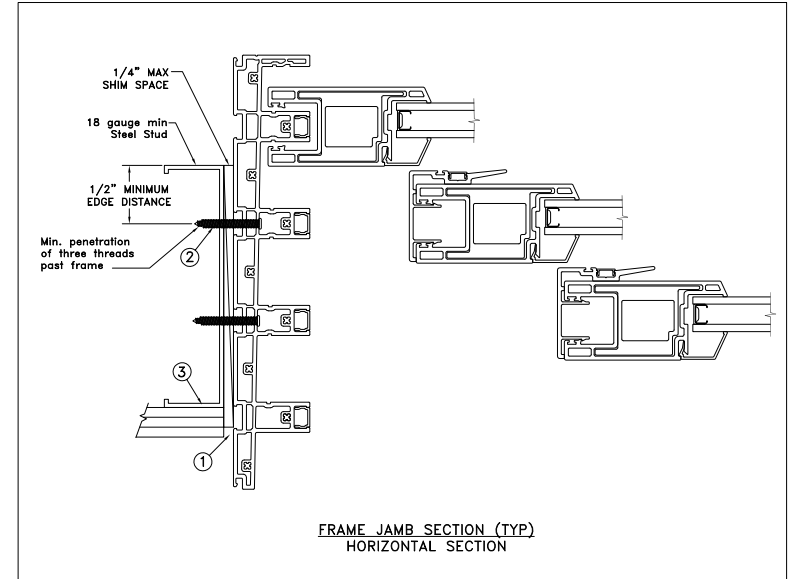
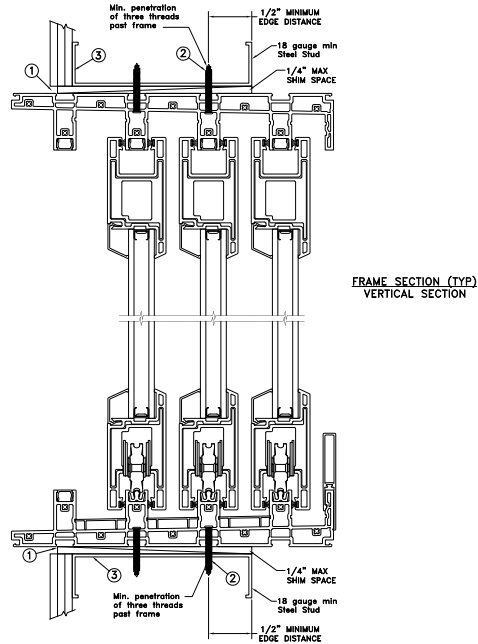
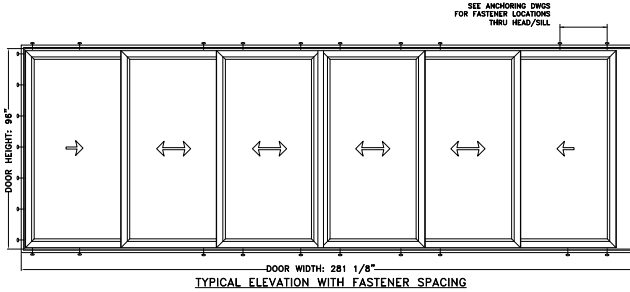
This drawing and its contents are confidential and are not to be reproduced or copied in whole or in part or used or disclosed to others except as authorized by JELD-WEN Inc.



HERMES F. NORERO, P.E.
Florida License No. 73778
398 East Dania Beach Blvd, Suite 200
Dania Beach, FL 33004

PROJECT ENGINEER:	DATE:	JELD-WEN	3737 LAKEPORT BLVD.	
DRAWN BY:	SCALE:		KLAMATH FALLS OR, 97601	
CHECKED BY:	TITLE:	PHONE: (800) 535-3936		
APPROVED BY:	Premium Vinyl Multi-Slide Patio Door 6-Panel 4-Track XXXXXP Jamb			
PART/PROJECT No.:				
IDENTIFIER No.		PLANT NAME AND LOCATION:	CAD DWG. No.:	REV:
NCTL 210-4025-1	Venice-FL	PremVinylMTSLDR4 Cert	A	

STEEL INSTALLATION



Max Frame	DP	IMPACT
281 3/8 x 96	+50/-55	NO

Installation Notes:

1. Seal flange/frame to substrate.
2. For anchoring into metal framing use #12 TEK Self-Tapping screws with sufficient length to achieve a minimum penetration of three threads past the frame thickness. Steel substrate min. 18ga., fy = 33 ksi.
3. Host structure (wood buck, masonry, steel) to be designed and anchored to properly transfer all loads to the structure. The host structure is the responsibility of the architect or engineer of record for the project of installation.

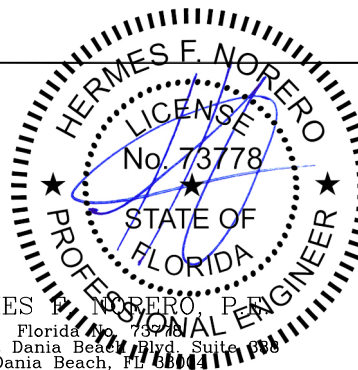
General Notes:

1. The product shown herein is designed, tested and manufactured to comply with the wind load criteria of the adopted International Building Code (IBC), the International Residential Code (IRC), the Florida Building Code (FBC) excluding HVHZ and the industry requirement for the stated conditions.
2. All glazing shall conform to ASTM E1300.
3. At minimum, glazing is 4.7mm tempered - 12.9mm airspace - 4.7mm tempered
4. Use structural or composite shims where required.

This schedule addresses only the fasteners required to anchor the unit to achieve the rated design pressure and impact performance (where applicable) up to the size limitations noted. It is not intended as a guide to the installation process and does not address the sealing consideration that may arise in different wall conditions. For the complete installation procedure, see the instructions packaged with the unit or go to www.jeld-wen.com/resources/installation.

DISCLAIMER:

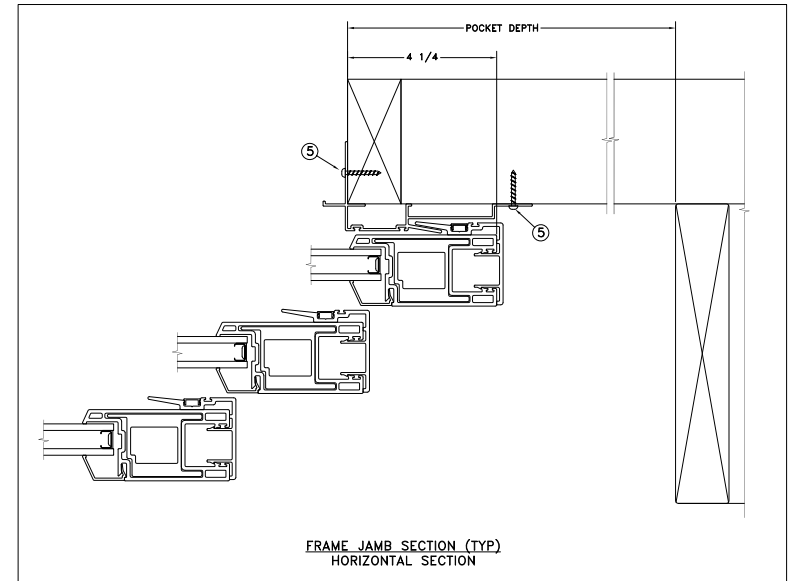
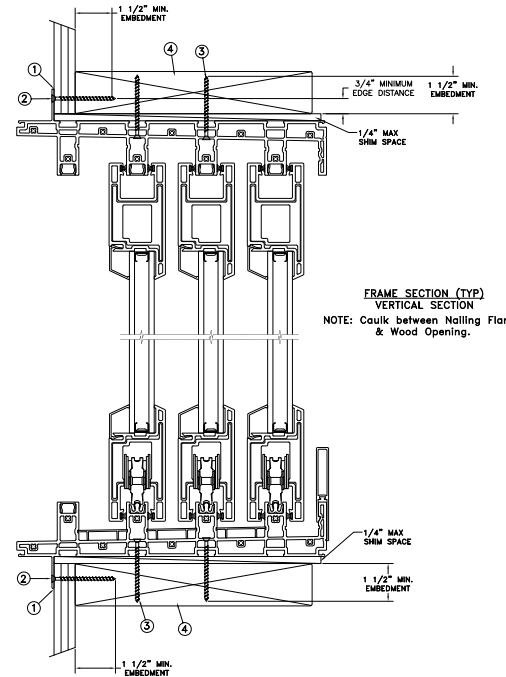
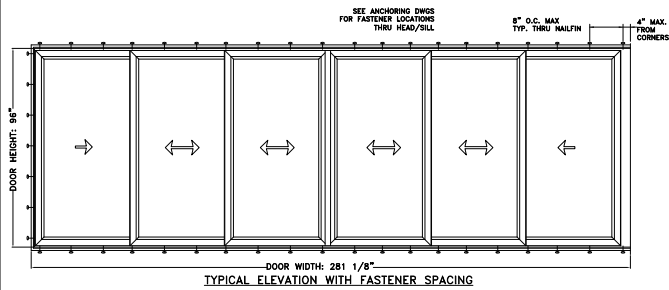
This drawing and its contents are confidential and are not to be reproduced or copied in whole or in part or used or disclosed to others except as authorized by JELD-WEN Inc.



HERMES F. NORERO, P.E.
Florida License No. 73778
398 East Dania Beach Blvd, Suite 100
Dania Beach, FL 33004

PROJECT ENGINEER:	DATE:	JELD-WEN 3737 LAKEPORT BLVD. KLAMATH FALLS OR, 97601 PHONE: (800) 535-3936
DRAWN BY:	SCALE:	
CHECKED BY:	TITLE:	Premium Vinyl Multi-Slide Patio Door 6-Panel 4-Track XXXXXP Jamb
APPROVED BY:		
PART/PROJECT No.:		
IDENTIFIER No.	PLANT NAME AND LOCATION:	CAD DWG. No.:
NCTL 210-4025-1	Venice-FL	PremVinylMTSLDR4 Cert
		REV: A
		SHEET

NAILFIN / THROUGH
FRAME INSTALLATION



Max Frame	DP	IMPACT
281 3/8 x 96	+50/-55	NO

Installation Notes:

1. Seal flange/frame to substrate.
2. Use #8 PH or greater fastener through the nailfin with sufficient length to penetrate a minimum of 1 1/2" into the wood framing. For 2x wood frame substrate (min. S.G. = 0.42)
3. Use #8 PH or greater fastener through the pre-drilled holes in the head/sill tracks at the center (2) towers with sufficient length to penetrate a minimum of 1 1/2" into the wood framing. See additional details for location and spacing.
4. Host structure (wood buck, masonry, steel) to be designed and anchored to properly transfer all loads to the structure. The host structure is the responsibility of the architect or engineer of record for the project of installation.
5. Use #8 PH or greater fastener through hook strip 6" from ends and 12" o.c.

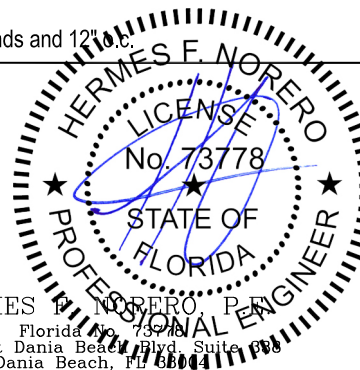
General Notes:

1. The product shown herein is designed, tested and manufactured to comply with the wind load criteria of the adopted International Building Code (IBC), the International Residential Code (IRC), the Florida Building Code (FBC) excluding HVHZ and the industry requirement for the stated conditions.
2. All glazing shall conform to ASTM E1300.
3. At minimum, glazing is 4.7mm tempered - 12.9mm airspace - 4.7mm tempered.
4. Use structural or composite shims where required.

This schedule addresses only the fasteners required to anchor the unit to achieve the rated design pressure and impact performance (where applicable) up to the size limitations noted. It is not intended as a guide to the installation process and does not address the sealing consideration that may arise in different wall conditions. For the complete installation procedure, see the instructions packaged with the unit or go to www.jeld-wen.com/resources/installation.

DISCLAIMER:

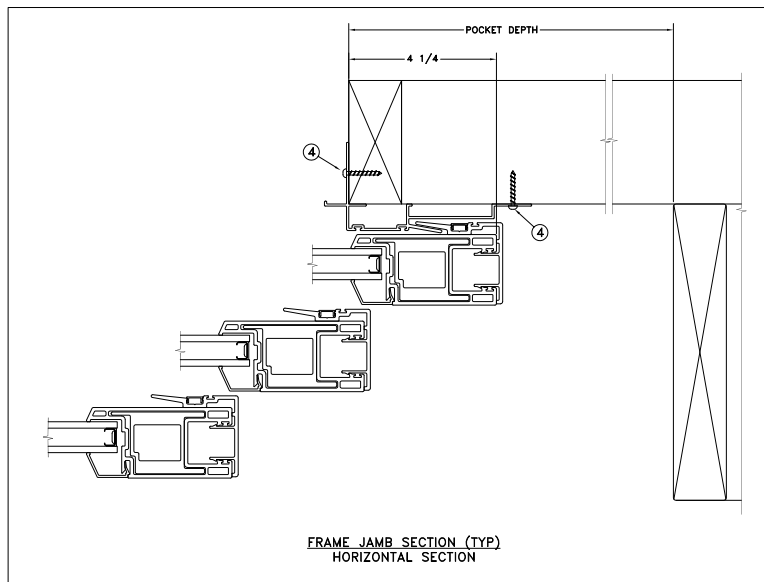
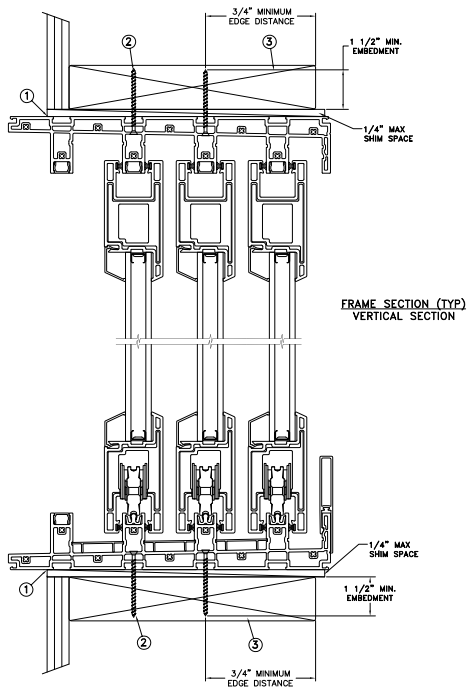
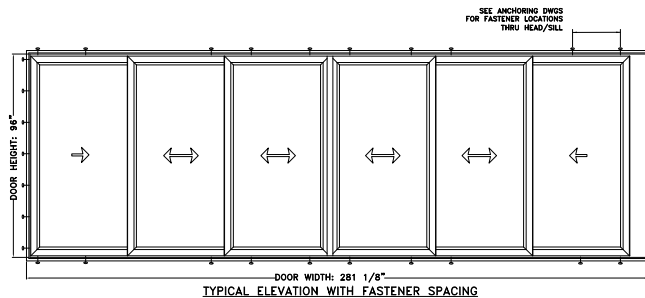
This drawing and its contents are confidential and are not to be reproduced or copied in whole or in part or used or disclosed to others except as authorized by JELD-WEN Inc.



HERMES E. NORERO, P.E.
Florida License No. 73778
398 East Dania Beach Blvd Suite 100
Dania Beach, FL 33004

PROJECT ENGINEER:	DATE:	JELD-WEN 3737 LAKEPORT BLVD. KLAMATH FALLS OR, 97601 PHONE: (800) 535-3936		
DRAWN BY:	SCALE:			
CHECKED BY:	TITLE:	Premium Vinyl Multi-Slide Patio Door 6-Panel 4-Track XXXXP Pocket		
APPROVED BY:				
PART/PROJECT No.:				
IDENTIFIER No.	PLANT NAME AND LOCATION:	CAD DWG. No.:	REV:	SHEET
NCTL 210-4025-1	Venice-FL	PremVinylMTSLDR4 Cert	A	

THROUGH FRAME
INSTALLATION



Max Frame	DP	IMPACT
281 3/8 x 96	+50/-55	NO

Installation Notes:

1. Seal flange/frame to substrate.
2. Use #14 PH or greater fastener through the pre-drilled holes in the head/sill tracks at the center (2) towers with sufficient length to penetrate a minimum of 1 1/2" into the wood framing. See additional details for location and spacing. For 2X wood frame substrate (min. SG = 0.42)
3. Host structure (wood buck, masonry, steel) to be designed and anchored to properly transfer all loads to the structure. The host structure is the responsibility of the architect or engineer of record for the project of installation.
4. Use #8 PH or greater fastener through hook strip 6" from ends and 12" o.c.

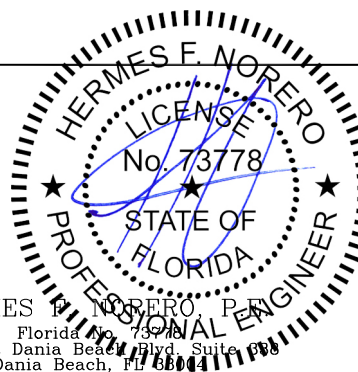
General Notes:

1. The product shown herein is designed, tested and manufactured to comply with the wind load criteria of the adopted International Building Code (IBC), the International Residential Code (IRC), the Florida Building Code (FBC) excluding HVHZ and the industry requirement for the stated conditions.
2. All glazing shall conform to ASTM E1300.
3. At minimum, glazing is 4.7mm tempered - 12.9mm airspace - 4.7mm tempered.
4. Use structural or composite shims where required.

This schedule addresses only the fasteners required to anchor the unit to achieve the rated design pressure and impact performance (where applicable) up to the size limitations noted. It is not intended as a guide to the installation process and does not address the sealing consideration that may arise in different wall conditions. For the complete installation procedure, see the instructions packaged with the unit or go to www.jeld-wen.com/resources/installation.

DISCLAIMER:

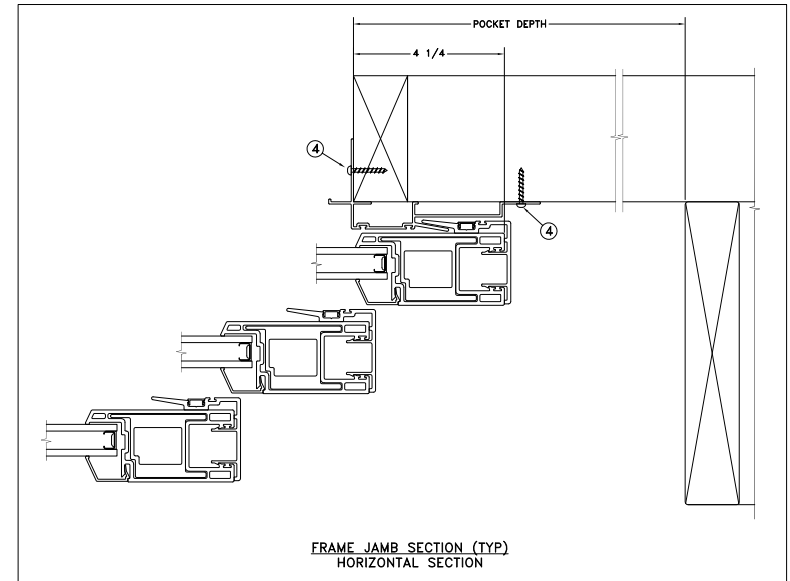
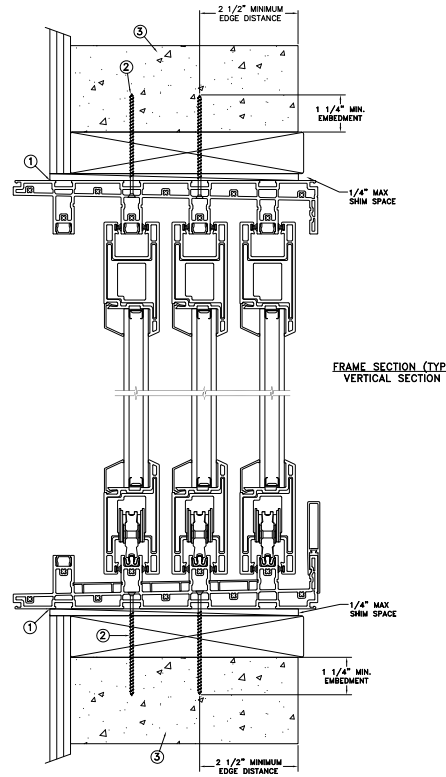
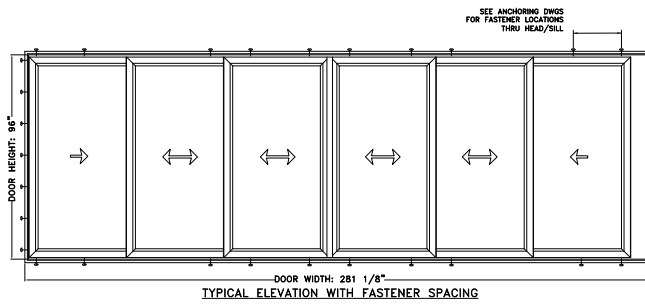
This drawing and its contents are confidential and are not to be reproduced or copied in whole or in part or used or disclosed to others except as authorized by JELD-WEN Inc.



HERMES F. NORERO, P.E.
Florida No. 73778
398 East Dania Beach Blvd Suite 200
Dania Beach, FL 33004

PROJECT ENGINEER:	DATE:	3737 LAKEPORT BLVD.	
	04/17/2017	KLAMATH FALLS OR, 97601	
DRAWN BY:	SCALE:	PHONE: (800) 535-3936	
J.HAWKINS	NTS		
CHECKED BY:	TITLE:		
D.CROWELL	Premium Vinyl Multi-Slide Patio Door 6-Panel 4-Track XXXXP Pocket		
APPROVED BY:			
J.GOOSEN			
PART/PROJECT No.:			
D014676			
IDENTIFIER No.	PLANT NAME AND LOCATION:	CAD DWG. No.:	REV: A SHEET
NCTL 210-4025-1	Venice-FL	PremVinylMTSLDR4 Cert	

CONCRETE/MASONRY
INSTALLATION



Max Frame	DP	IMPACT
281 3/8 x 96	+50/-55	NO

Installation Notes:

1. Seal flange/frame to substrate.
2. Use 1/4" Elco Tapcon or equivalent fasteners through the pre-drilled holes in the head/sill tracks at the center (2) towers with sufficient length to penetrate a minimum of 1 1/2" into concrete or masonry at each location with a 2 1/2" min. from edge distance. For concrete (min. fc = 2000 psi) or masonry substrate (CMU shall adhere to ASTM C90).
3. Host structure (wood buck, masonry, steel) to be designed and anchored to properly transfer all loads to the structure. The host structure is the responsibility of the architect or engineer of record for the project of installation.
4. Use #8 PH or greater fastener through hook strip 6" from ends and 12" o.c.

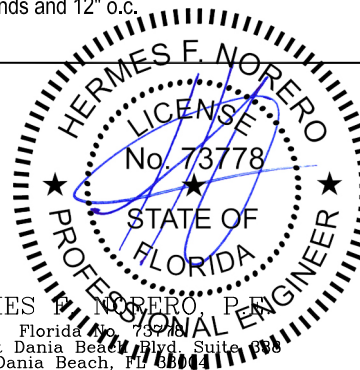
General Notes:

1. The product shown herein is designed, tested and manufactured to comply with the wind load criteria of the adopted International Building Code (IBC), the International Residential Code (IRC), the Florida Building Code (FBC) excluding HVHZ and the industry requirement for the stated conditions.
2. All glazing shall conform to ASTM E1300.
3. At minimum, glazing is 4.7mm tempered - 12.9mm airspace - 4.7mm tempered.
4. Use structural or composite shims where required.

This schedule addresses only the fasteners required to anchor the unit to achieve the rated design pressure and impact performance (where applicable) up to the size limitations noted. It is not intended as a guide to the installation process and does not address the sealing consideration that may arise in different wall conditions. For the complete installation procedure, see the instructions packaged with the unit or go to www.jeld-wen.com/resources/installation.

DISCLAIMER:

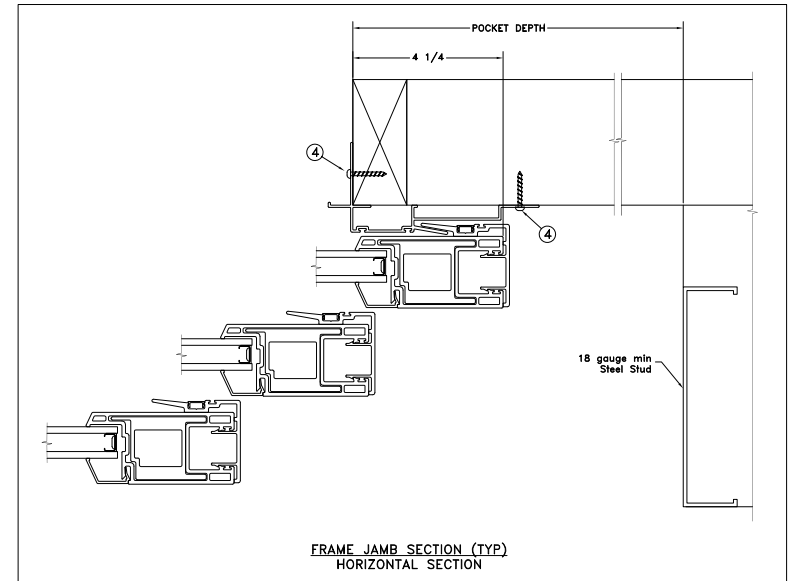
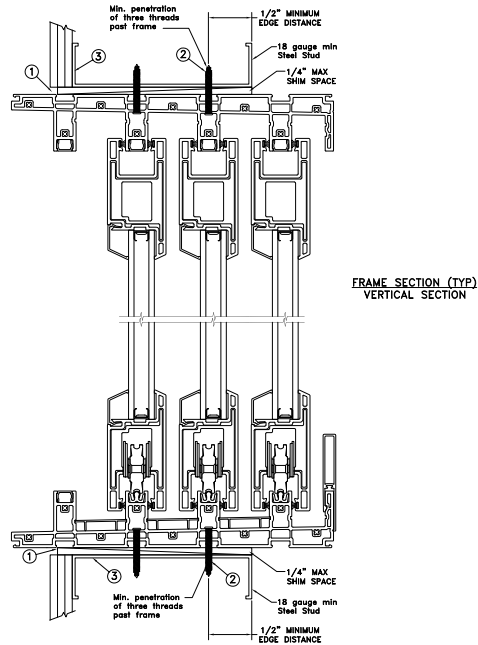
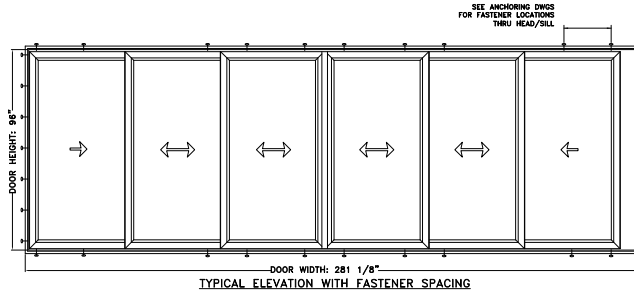
This drawing and its contents are confidential and are not to be reproduced or copied in whole or in part or used or disclosed to others except as authorized by JELD-WEN Inc.



HERMES F. NORERO, P.E.
Florida Professional Engineer
398 East Dania Beach Blvd Suite 200
Dania Beach, FL 33004

PROJECT ENGINEER:	DATE:	JELD-WEN	3737 LAKEPORT BLVD.		
DRAWN BY:	SCALE:		KLAMATH FALLS OR, 97601		
CHECKED BY:	TITLE:	PHONE: (800) 535-3936			
APPROVED BY:	Premium Vinyl Multi-Slide Patio Door 6-Panel 4-Track XXXXP Pocket				
PART/PROJECT No.:					
IDENTIFIER No.		PLANT NAME AND LOCATION:	CAD DWG. No.:	REV:	SHEET
NCTL 210-4025-1		Venice-FL	PremVinylMTSLDR4 Cert	A	

STEEL INSTALLATION



Max Frame	DP	IMPACT
281 3/8 x 96	+50/-55	NO

Installation Notes:

1. Seal flange/frame to substrate.
2. For anchoring into metal framing use #12 TEK Self-Tapping screws with sufficient length to achieve a minimum penetration of three threads past the frame thickness. Steel substrate min. 18ga., fy = 33 ksi.
3. Host structure (wood buck, masonry, steel) to be designed and anchored to properly transfer all loads to the structure. The host structure is the responsibility of the architect or engineer of record for the project of installation.
4. Use #8 PH or greater fastener through hook strip 6" from ends and 12" o.c.

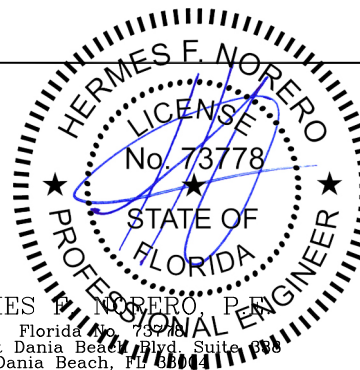
General Notes:

1. The product shown herein is designed, tested and manufactured to comply with the wind load criteria of the adopted International Building Code (IBC), the International Residential Code (IRC), the Florida Building Code (FBC) excluding HVHZ and the industry requirement for the stated conditions.
2. All glazing shall conform to ASTM E1300.
3. At minimum, glazing is 4.7mm tempered - 12.9mm airspace - 4.7mm tempered
4. Use structural or composite shims where required.

This schedule addresses only the fasteners required to anchor the unit to achieve the rated design pressure and impact performance (where applicable) up to the size limitations noted. It is not intended as a guide to the installation process and does not address the sealing consideration that may arise in different wall conditions. For the complete installation procedure, see the instructions packaged with the unit or go to www.jeld-wen.com/resources/installation.

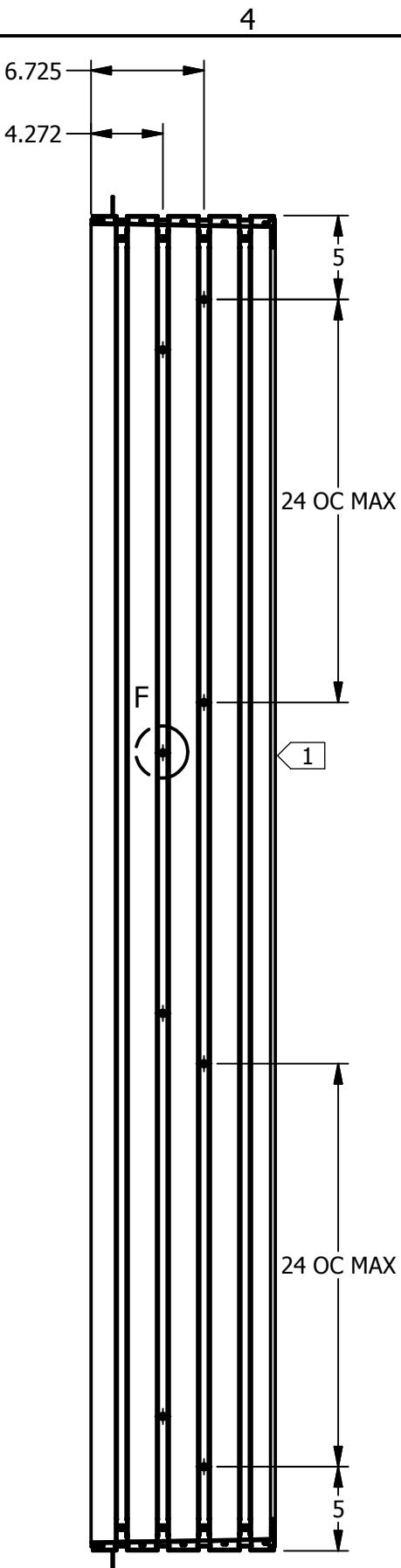
DISCLAIMER:

This drawing and its contents are confidential and are not to be reproduced or copied in whole or in part or used or disclosed to others except as authorized by JELD-WEN Inc.



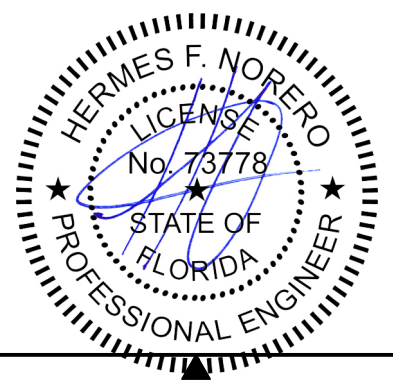
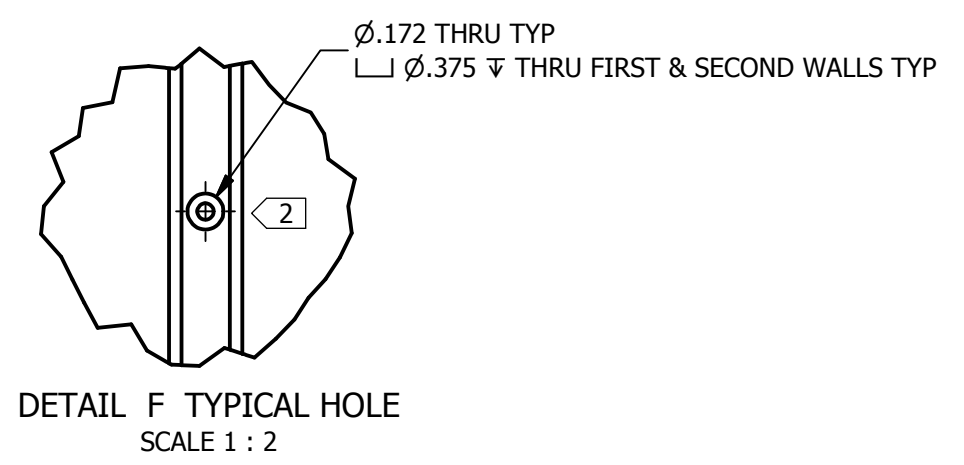
HERMES F. NORERO, P.E.
Florida No. 73778
398 East Dania Beach Blvd Suite 200
Dania Beach, FL 33004

PROJECT ENGINEER:	DATE:	JELD-WEN	3737 LAKEPORT BLVD.	
DRAWN BY:	SCALE:		KLAMATH FALLS OR, 97601	
CHECKED BY:	TITLE:	PHONE: (800) 535-3936		
APPROVED BY:	Premium Vinyl Multi-Slide Patio Door 6-Panel 4-Track XXXXP Pocket			
PART/PROJECT No.:				
IDENTIFIER No.		PLANT NAME AND LOCATION:	CAD DWG. No.:	REV:
NCTL 210-4025-1	Venice-FL	PremVinylMTSLDR4 Cert	A	

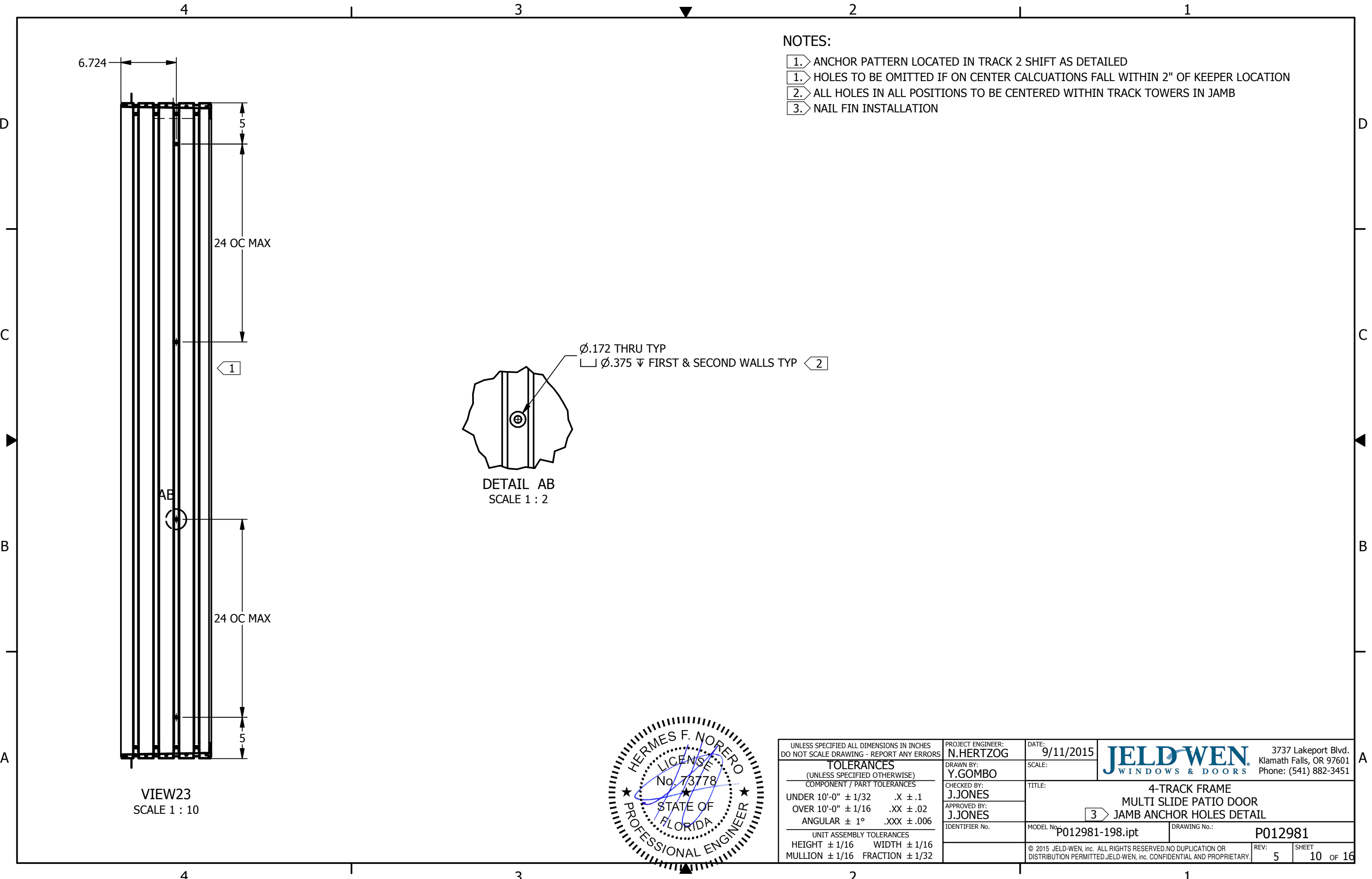


NOTES:

- 1. ANCHOR PATTERN LOCATED IN TRACKS 2 & 3 SHIFT AS DETAILED
- 1. HOLES TO BE OMITTED IF ON CENTER CALCULATIONS FALL WITHIN 2" OF KEEPER LOCATION
- 2. ALL HOLES IN ALL POSITIONS TO BE CENTERED WITHIN TRACK TOWERS IN JAMB
- 3. THRU FRAME INSTALLATION

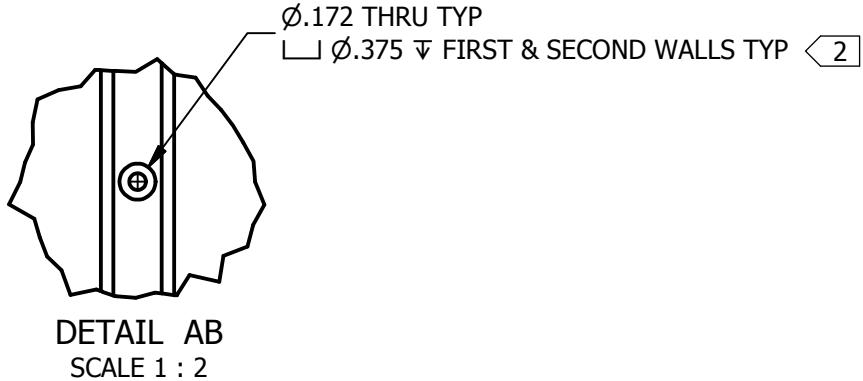


UNLESS SPECIFIED ALL DIMENSIONS IN INCHES DO NOT SCALE DRAWING - REPORT ANY ERRORS		PROJECT ENGINEER: N.HERTZOG	DATE: 9/11/2015	3737 Lakeport Blvd. Klamath Falls, OR 97601 Phone: (541) 882-3451
TOLERANCES (UNLESS SPECIFIED OTHERWISE) COMPONENT / PART TOLERANCES UNDER 10'-0" ± 1/32 .X ± .1 OVER 10'-0" ± 1/16 .XX ± .02 ANGULAR ± 1° .XXX ± .006 UNIT ASSEMBLY TOLERANCES HEIGHT ± 1/16 WIDTH ± 1/16 MULLION ± 1/16 FRACTION ± 1/32		DRAWN BY: Y.GOMBO	SCALE: 1:10	
		CHECKED BY: J.JONES	TITLE: 4-TRACK FRAME MULTI SLIDE PATIO DOOR JAMB ANCHOR HOLES DETAIL	
		APPROVED BY: J.JONES	MODEL No.: P012981-199.ipt	DRAWING No.: P012981
		IDENTIFIER No.	© 2015 JELD-WEN, inc. ALL RIGHTS RESERVED. NO DUPLICATION OR DISTRIBUTION PERMITTED. JELD-WEN, inc. CONFIDENTIAL AND PROPRIETARY.	REV: 5 SHEET 9 OF 16

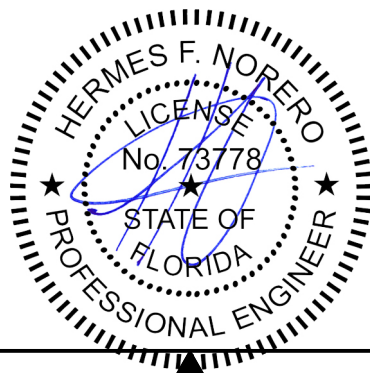


NOTES:

- 1. ANCHOR PATTERN LOCATED IN TRACK 2 SHIFT AS DETAILED
- 1. HOLES TO BE OMITTED IF ON CENTER CALCULATIONS FALL WITHIN 2" OF KEEPER LOCATION
- 2. ALL HOLES IN ALL POSITIONS TO BE CENTERED WITHIN TRACK TOWERS IN JAMB
- 3. NAIL FIN INSTALLATION



VIEW23
SCALE 1 : 10

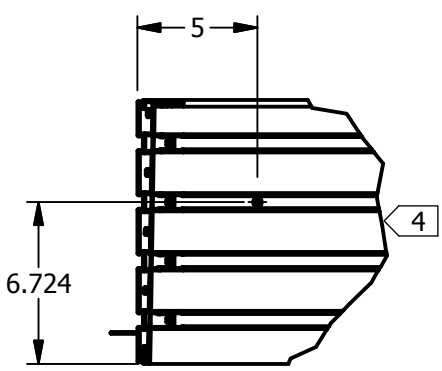


UNLESS SPECIFIED ALL DIMENSIONS IN INCHES DO NOT SCALE DRAWING - REPORT ANY ERRORS		PROJECT ENGINEER: N.HERTZOG	DATE: 9/11/2015	 3737 Lakeport Blvd. Klamath Falls, OR 97601 Phone: (541) 882-3451
TOLERANCES (UNLESS SPECIFIED OTHERWISE) COMPONENT / PART TOLERANCES UNDER 10'-0" ± 1/32 .X ± .1 OVER 10'-0" ± 1/16 .XX ± .02 ANGULAR ± 1° .XXX ± .006 UNIT ASSEMBLY TOLERANCES HEIGHT ± 1/16 WIDTH ± 1/16 MULLION ± 1/16 FRACTION ± 1/32		DRAWN BY: Y.GOMBO	SCALE:	
		CHECKED BY: J.JONES	TITLE: 4-TRACK FRAME MULTI SLIDE PATIO DOOR JAMB ANCHOR HOLES DETAIL	
		APPROVED BY: J.JONES	MODEL No.: P012981-198.ipt	DRAWING No.: P012981
		IDENTIFIER No.:	© 2015 JELD-WEN, inc. ALL RIGHTS RESERVED. NO DUPLICATION OR DISTRIBUTION PERMITTED. JELD-WEN, inc. CONFIDENTIAL AND PROPRIETARY.	REV: 5 SHEET 10 of 16

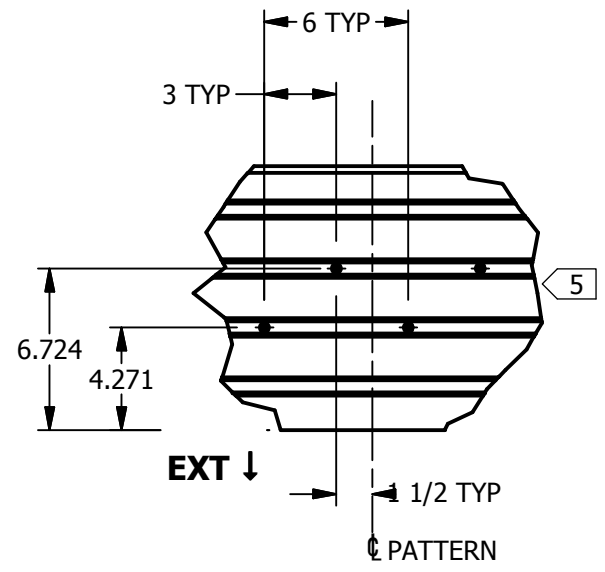
4 3 2 1

NOTES:

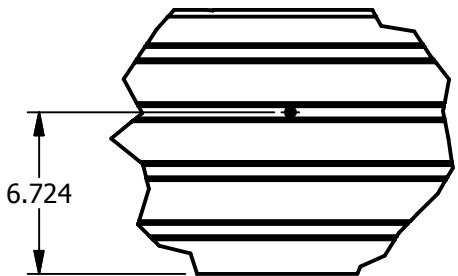
- 1 ALL HOLES IN ALL POSITIONS TO BE CENTERED WITHIN TRACK TOWERS AT HEAD OR SILL
- 2 TYP 1 ANCHOR PER PANEL LOCATED IN TRACK 2 TOWER AND ALIGNED WITH CENTER POINT OF EACH CLOSED POSITION PANEL
- 3 ANCHOR PATTERN LOCATED IN TRACKS 2 AND 3 TOWER AT EACH INTERLOCK AREA
- 4 1 ANCHOR AT ENDS LOCATED IN TRACK 2 TOWER BOTH HEAD AND SILL
- 5 TYP 4 ANCHOR PATTERN LOCATED IN TRACK 2 & 3 TOWER APPROXIMATE CENTER OF EACH CLOSED POSITION PANEL INTERLOCK AREA
- 6 CONFIGURATION FOR PG35/50 DOORS WITH THRU FRAME INSTALL



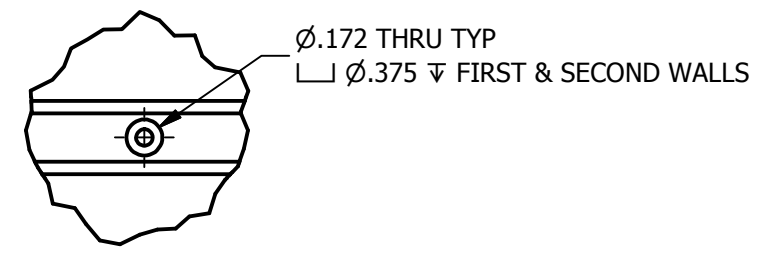
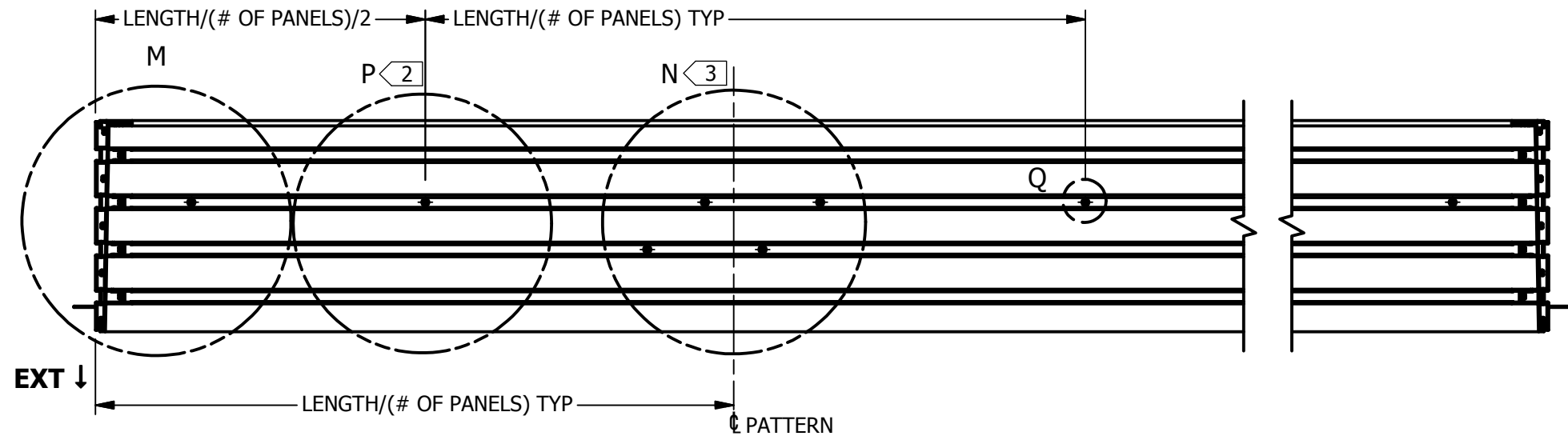
EXT ↓ DETAIL M
SCALE 1 / 8



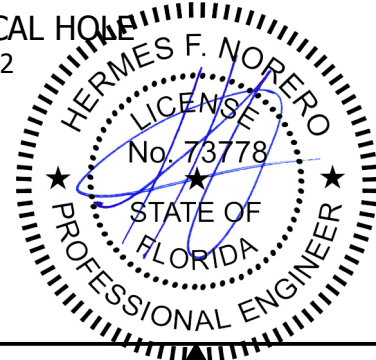
EXT ↓ DETAIL N
SCALE 1 / 8



EXT ↓ DETAIL P
SCALE 1 / 8



DETAIL Q TYPICAL HOLE
SCALE 1 : 2

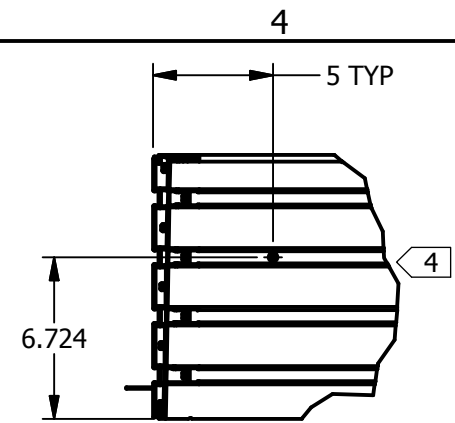


UNLESS SPECIFIED ALL DIMENSIONS IN INCHES DO NOT SCALE DRAWING - REPORT ANY ERRORS		PROJECT ENGINEER: N.HERTZOG	DATE: 9/11/2015	 3737 Lakeport Blvd. Klamath Falls, OR 97601 Phone: (541) 882-3451
TOLERANCES (UNLESS SPECIFIED OTHERWISE) COMPONENT / PART TOLERANCES UNDER 10'-0" ± 1/32 .X ± .1 OVER 10'-0" ± 1/16 .XX ± .02 ANGULAR ± 1° .XXX ± .006 UNIT ASSEMBLY TOLERANCES HEIGHT ± 1/16 WIDTH ± 1/16 MULLION ± 1/16 FRACTION ± 1/32		DRAWN BY: Y.GOMBO	SCALE: 1:8	
		CHECKED BY: J.JONES	TITLE: 4-TRACK FRAME MULTI SLIDE PATIO DOOR 6 SILL/HEAD ANCHOR HOLE DETAIL	
		APPROVED BY: J.JONES	MODEL No.: P012981-397.ipt	DRAWING No.: P012981
		IDENTIFIER No.	© 2015 JELD-WEN, inc. ALL RIGHTS RESERVED. NO DUPLICATION OR DISTRIBUTION PERMITTED. JELD-WEN, inc. CONFIDENTIAL AND PROPRIETARY.	REV: 5 SHEET 11 OF 16

D
C
B
A

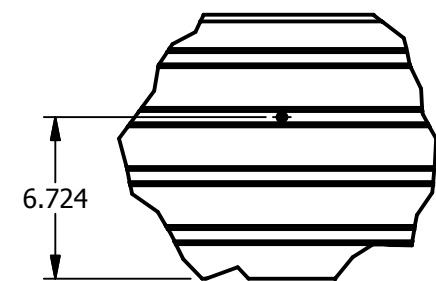
D
C
B
A

4 3 2 1



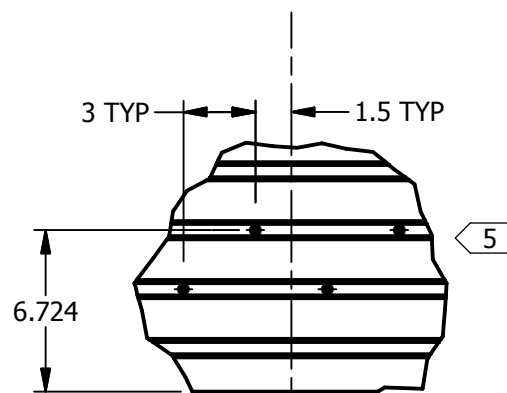
DETAIL R
SCALE 1 / 8

EXT ↓



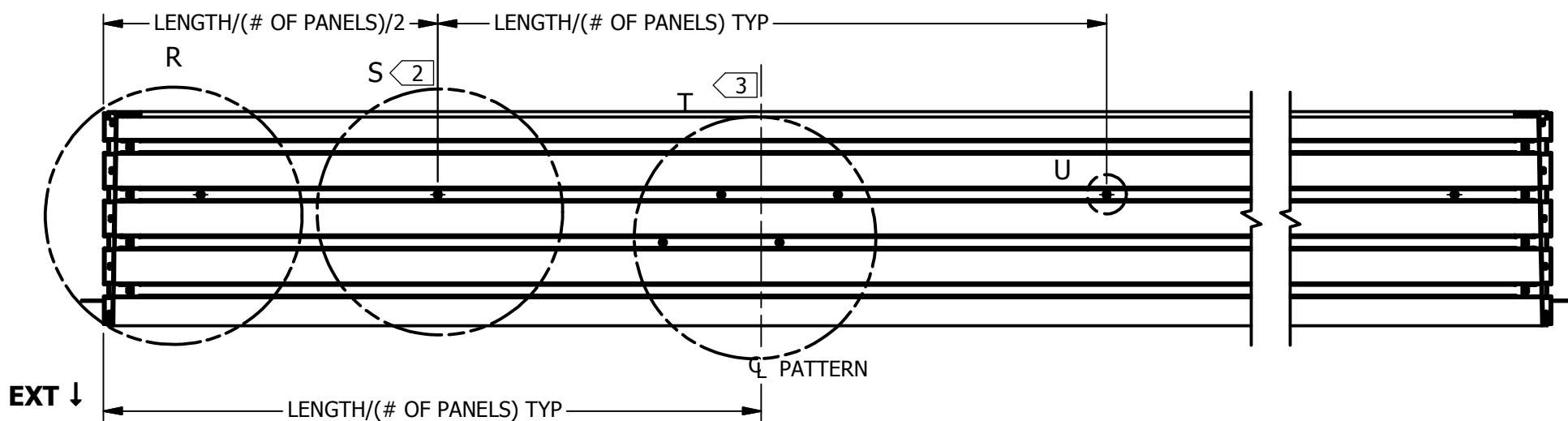
DETAIL S
SCALE 1 / 8

EXT ↓

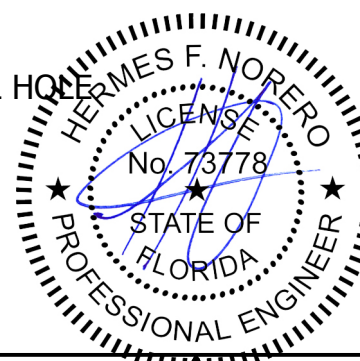
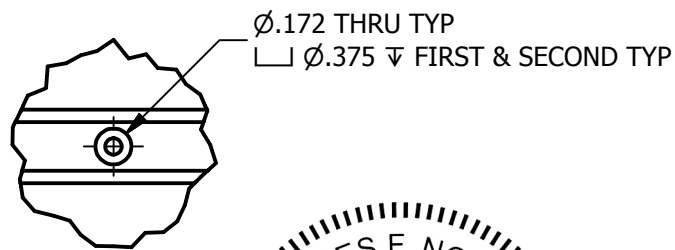


DETAIL T
SCALE 1 / 8

EXT ↓



DETAIL U TYPICAL HOLE
SCALE 1 : 2



NOTES:

- 1 ALL HOLES IN ALL POSITIONS TO BE CENTERED WITHIN TRACK TOWERS AT HEAD OR SILL
- 2 TYP 1 ANCHOR PER PANEL LOCATED IN TRACK 2 TOWER AND ALIGNED WITH CENTER POINT OF EACH CLOSED POSITION PANEL
- 3 ANCHOR PATTERN LOCATED IN TRACK 2 TOWER AT EACH INTERLOCK AREA
- 4 1 ANCHOR AT ENDS LOCATED IN TRACK 2 TOWER BOTH HEAD AND SILL
- 5 TYP 3 ANCHOR PATTERN LOCATED IN TRACK 2 TOWER APPROXIMATE CENTER OF EACH CLOSED POSITION PANEL INTERLOCK AREA
- 6 CONFIGURATION FOR PG35/50 DOORS WITH NAIL FIN INSTALL

UNLESS SPECIFIED ALL DIMENSIONS IN INCHES
DO NOT SCALE DRAWING - REPORT ANY ERRORS

TOLERANCES (UNLESS SPECIFIED OTHERWISE) COMPONENT / PART TOLERANCES	
UNDER 10'-0" ± 1/32	.X ± .1
OVER 10'-0" ± 1/16	.XX ± .02
ANGULAR ± 1°	.XXX ± .006
UNIT ASSEMBLY TOLERANCES	
HEIGHT ± 1/16	WIDTH ± 1/16
MULLION ± 1/16	FRACTION ± 1/32

PROJECT ENGINEER: N.HERTZOG	DATE: 9/11/2015
DRAWN BY: Y.GOMBO	SCALE: 1:8
CHECKED BY: J.JONES	TITLE: 4-TRACK FRAME MULTI SLIDE PATIO DOOR 6 SILL/HEAD ANCHOR HOLE DETAIL
APPROVED BY: J.JONES	MODEL No.: P012981-396.ipt
IDENTIFIER No.	DRAWING No.: P012981

JELD-WEN
WINDOWS & DOORS
3737 Lakeport Blvd.
Klamath Falls, OR 97601
Phone: (541) 882-3451

© 2015 JELD-WEN, inc. ALL RIGHTS RESERVED. NO DUPLICATION OR DISTRIBUTION PERMITTED. JELD-WEN, inc. CONFIDENTIAL AND PROPRIETARY. REV: 5 SHEET 12 OF 16